

Digital Cheshire - Appendix

1. Appendix A

- 1.1. Map generated for State Aid compliancy that colour codes postcode block areas to indicate if one or more suppliers can provide above 30Mbps for all premises in that area. White colour coded blocks indicate that some premises in those areas are not able to receive 30Mbps speeds from any supplier.

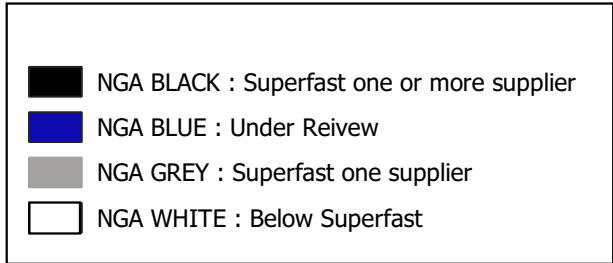
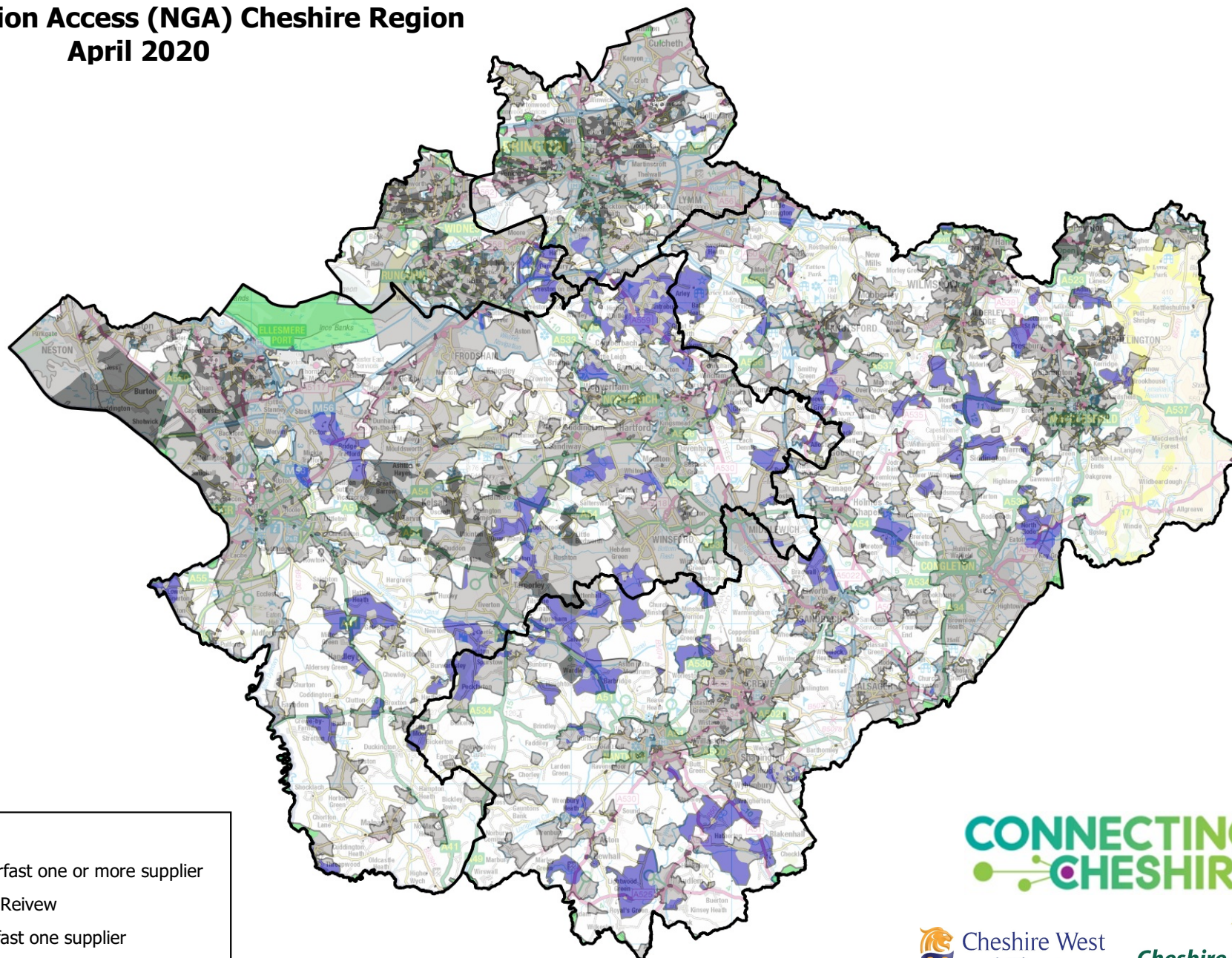
2. Appendix B

- 2.1. Map with a high level view of Cheshire East. The red points indicate postcode locations where premises receive sub 30Mbps connection speeds

3. Appendix C

- 3.1. Map of an example area within Cheshire East with red points indicating problem postcode locations and showing the distribution at a more local level.

Next Generation Access (NGA) Cheshire Region April 2020



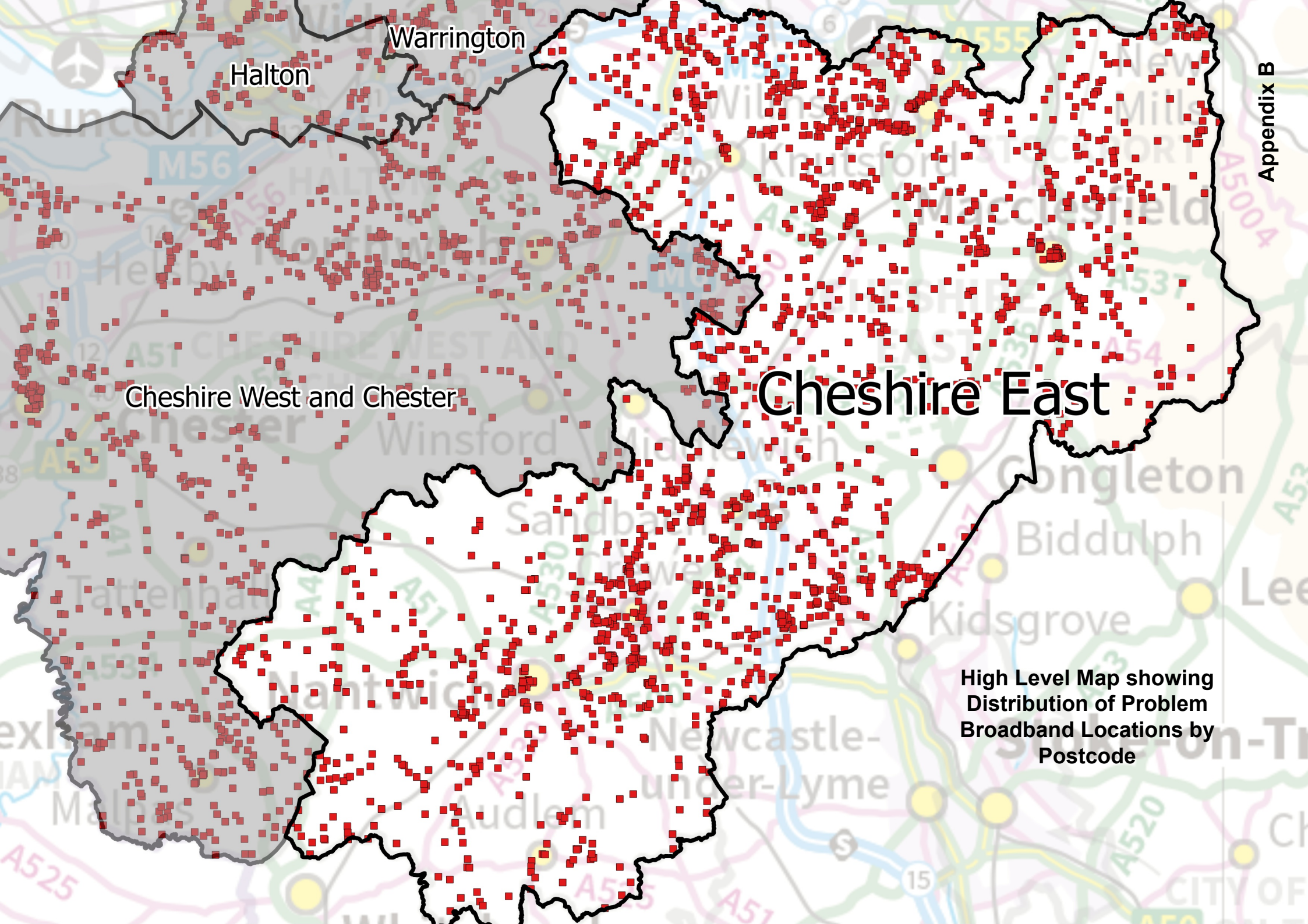
CONNECTING
CHESHIRE

Cheshire West
and Chester

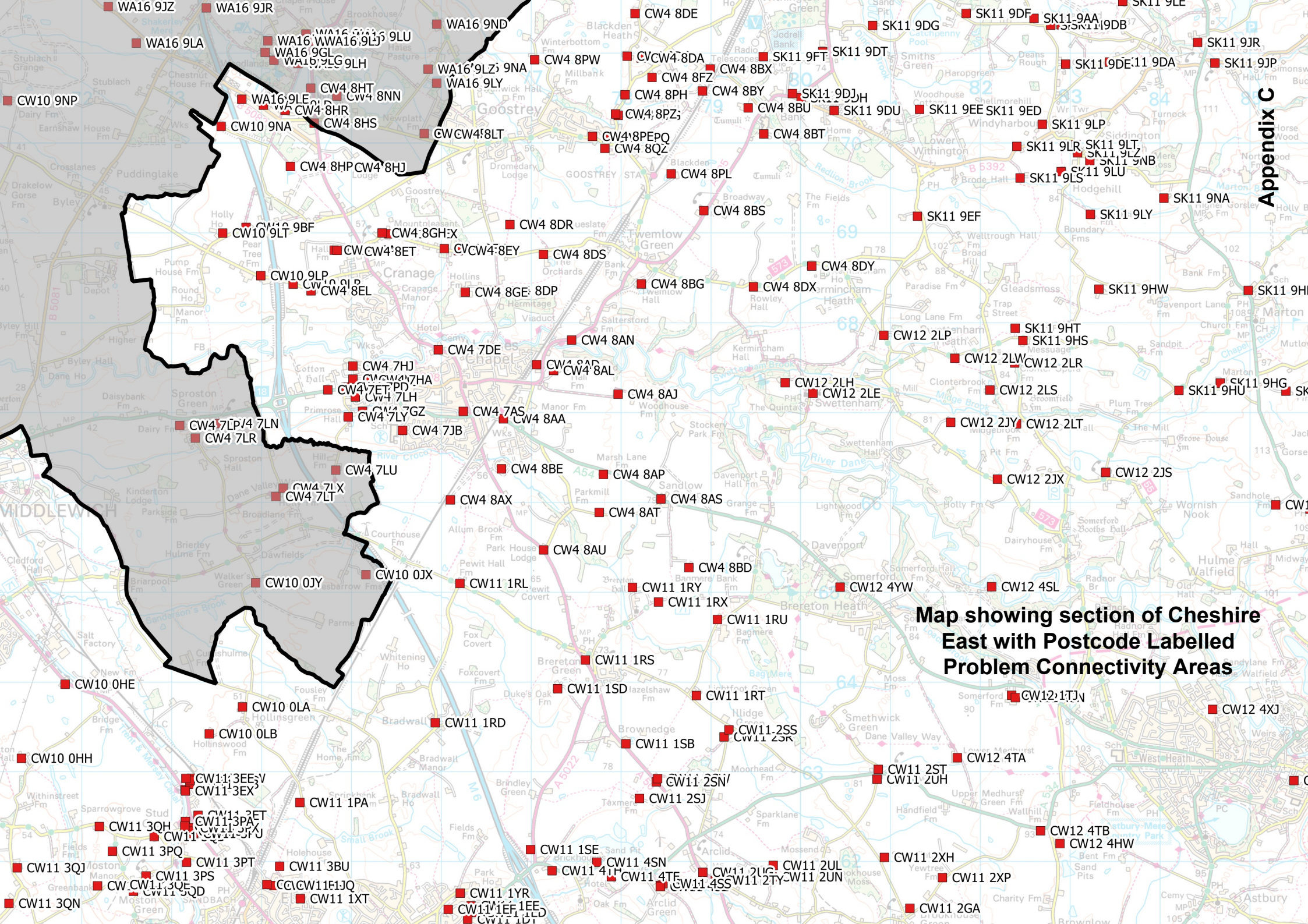
Cheshire East
Council

HALTON
BOROUGH COUNCIL

WARRINGTON
Borough Council



High Level Map showing
Distribution of Problem
Broadband Locations by
Postcode



Map showing section of Cheshire East with Postcode Labelled Problem Connectivity Areas

Appendix C